

Red & White Services Fleet List 1930-1975

1. Single Deck Buses

1.10 1929-37 Leyland Tiger TS

The first 6-cylinder Leyland Tigers were produced in 1927. These were designated TS1 with 17ft 6in wheelbase and 27ft 6in length which was the maximum length allowed in Britain until 1950. In 1929 the TS2 chassis was also available having the same wheelbase but of length 26ft resulting in a shorter rear overhang. In 1930 the TS3 was introduced which had a frame based on the Leyland Lion LT2 but with a 6-cylinder engine and 16ft 6in wheelbase. A more rounded Leyland body style also appeared at the same time. Production of the TS1, TS2 and TS3 ceased at the end of 1931. A new updated version, the TS4, was available from the end of 1931 until 1933 with a larger engine and heavier bodywork. Oil engines were also offered. There was no TS5, and the TS6 appeared in the spring of 1933 with a completely revised front end having the radiator flush with the front of the frame and a reduced bonnet length. The TS7 superseded the TS6 in 1935 and the TS8 appeared in 1937. Both petrol and oil engines were available but by 1939 the oil engine was the choice of most operators. Most of these types appeared in the Red & White fleet, but nearly all of them came from acquisitions, some with bus bodywork and some with coach bodywork. Only one TS3 and four TS4s were acquired new by Red & White. Many were rebodied by Duple.

Original Fleet No.	1951-75 No.	Registration	New	Chassis	Body	New Body	New / Previous owner; Transfers to or from other Red & White companies	Out
557		DR 5827	1929	Leyland Tiger TS1 (60761)	Leyland B31D	-35-	Transferred from United Welsh	1948-51
100	S129	DF 9186	1929	Leyland Tiger TS2 (60740)	C26-	1941 Duple B35C	ex-Red Bus, Stroud 1932	1952
100?		DF 6918	1929	Leyland Tiger TS2		1941 Duple B35C	ex-Red Bus, Stroud 1932	
102		DF 6916	1929	Leyland Tiger TS (60157)	-26-	-35-	ex-Red Bus, Stroud 1932	1948-51
103		KD 4778	1929	Leyland Tiger TS2 (60340)	Burlingham C30-		ex-Bouts Bros 1931	1948-51
208		MT 2047	1929	Leyland Tiger (60131)	Dodson C22D	-35-	ex-Gt. Western Express 1932	1948-51
209		MT 2048	1929	Leyland Tiger (60132)	Dodson C22D	re-reg'd EAX 353 ca 1940	ex-Gt. Western Express 1932	by 1948
210		MT 2049	1929	Leyland Tiger TS2 (60133)	Dodson C22D	19?? Duple B—C	ex-Gt. Western Express 1932 Transferred to United Welsh 19?	by 1948
211		UW 9925	1929	Leyland Tiger (60710)	Dodson C22D		ex-Gt. Western Express 1932 Transferred to United Welsh 19?	by 1948
212		GC 8220	1930	Leyland Tiger (61067)	Dodson C22D	B34-	ex-G. W. Express 1932	1948-51
213		GC 8221	1930	Leyland Tiger (61068)	Dodson C22D	19?? Duple B—C	ex-Gt. Western Express 1932 Transferred to United Welsh 19?	by 1948
214	S330	GC 8222	1930	Leyland Tiger TS (61069)	Dodson C22D	1940 Duple B35C	ex-Gt. Western Express 1932	1952
92		FV 1124	1930	Leyland Tiger TS (60888)	-34-			1948-51
104		GJ 5125	1930	Leyland Tiger TS (60943)	Strachans C30R		ex-Red Bus, Stroud 1932	by 1948
181		WO 5292	1931	Leyland Tiger TS3 (61773)	-31-		New	1948-51
347		TF 6780	1931	Leyland Tiger TS4 (113)	-35-		ex-Imperial Motors 1937	1948-51
348	S732	TF 9578	1932	Leyland Tiger TS4 (1876)	Leyland B32-	1940 Duple B37C	ex-Imperial Motors 1937	1953
105		TH 2836	1932	Leyland Tiger TS4 (1672)	B35-		ex-Wm David, Ogmores Vale	by 1948
96	S532	WO 6429	1932	Leyland Tiger TS4 (1505)	-32-	1939 Duple B35C	New	1953
97		WO 6430	1932	Leyland Tiger TS4 (1506)	-32-	19?? Duple B35C	New	1948-51
98	S632	WO 6431	1932	Leyland Tiger TS4 (1507)	-32-	1939 Duple B35C	New	1953
99		WO 6432	1932	Leyland Tiger TS4 (1508)	-32-	19?? Duple B35C	New	1948-51

Red & White Services Fleet List 1930-1975

598	S1033	WJ 7184	1933	Leyland Tiger TS4 (2843)		1941 Duple B35R	ex-Griffin Motor Co 80 1950	5/1952
599	S1133	WJ 7185	1933	Leyland Tiger TS4 (2844)		1941 Duple B35R	ex-Griffin Motor Co 81 1950	5/1952
610	S135	AWT 233	1935	Leyland Tiger TS7 (6626)	Burlingham C32R	1942 Duple B36F	ex-Griffin Motor Co 64 1950	5/1952
608	S1336	EU 6011	1936	Leyland Tiger TS7 (9743)	Leyland B35R		ex-Griffin Motor Co 62 1950	5/1952
609	S1436	EU 6012	1936	Leyland Tiger TS7 (9744)	Leyland B35R		ex-Griffin Motor Co 63 1950	12/1953
597	S2337	BTC 824	1937	Leyland Tiger TS7 (11555)	Leyland B32F		ex-Griffin Motor Co 74 1950	12/1953
621	S2137	EU 6355	1937	Leyland Tiger TS7 (14424)	Leyland B36R		ex-Griffin Motor Co 68 1950	5/1952
596	S2237	EU 6356	1937	Leyland Tiger TS7 (14425)	Leyland B36R		ex-Griffin Motor Co 69 1950	5/1952
666	S2437	BDW 5	1937	Leyland Tiger TS8 (14611)	Weymann B33D	Later B35R	ex-Griffin Motor Co 99 1950	5/1952
667	C1137	BDW 6	1937	Leyland Tiger TS8 (14612)	Weymann B33D	1948 Duple C35F†	ex-Griffin Motor Co 100 1950	1952

Fleet Nos. in red are reallocated numbers from withdrawn vehicles

† The 1948 Duple C35F body on BDW 6 was transferred to Leyland Tiger EU8526 (S2647) in 1953 and the chassis disposed of.



1929 Leyland Tiger MT 2049 in Great Western Express livery with Dodson C22D bodywork. This vehicle lost its body in a fire when 6 months old and was rebodied with another Dodson body (*M Mayo Collection*)



ex-Great Western Express 1930 Leyland Tiger GC 8221 (213) in early 1930s Red & White livery at Cheltenham Coach Station.

Red & White Services Fleet List 1930-1975



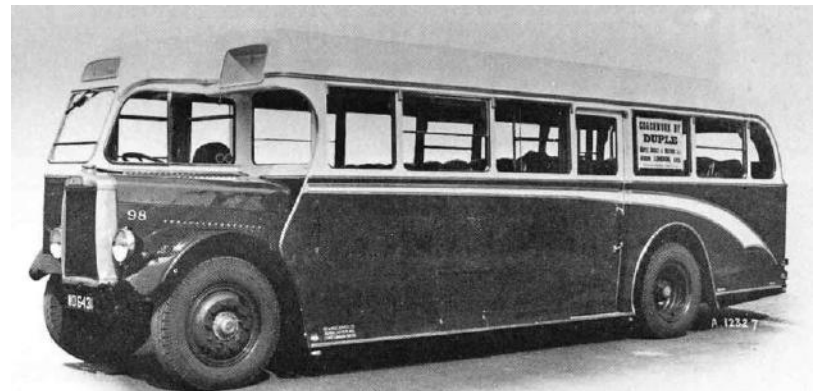
transfer to United Welsh. (Alan B Cross)



GC 8221 (213) rebodied by Duple and photographed after transfer to United Welsh. (Alan B Cross)



1937 Leyland Tiger TS7 BTC 824 with Leyland B32F bodywork (later Red & White 597 and S2337) in original Griffin livery of dark red and grey outside the Butchers Arms in Blackwood. (Omnibus Society / Roy Marshall)



One of the few Red & White Leyland Tiger purchases WO 6431 (98), a 1932 TS4 rebodied in 1939 with Duple B35C coachwork. (Duple Coachbuilders Ltd)