

## Red & White Services Fleet List 1930-1975

### 1. Single Deck Buses

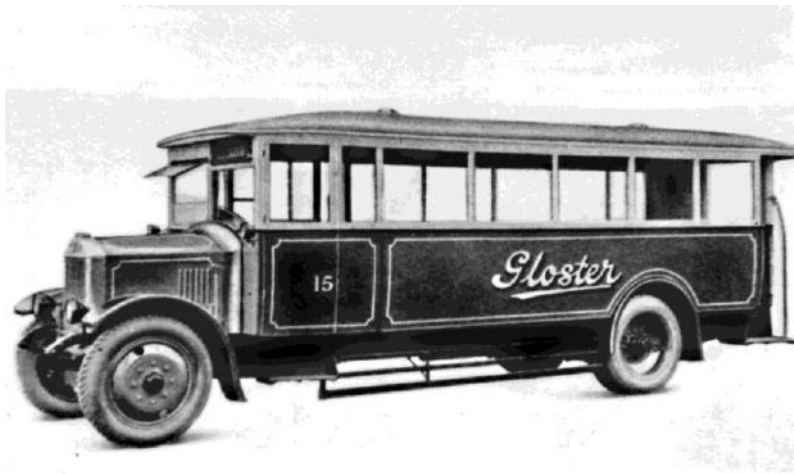
#### 1.4 1926-30 Albion Viking 26

The normal control Albion 26 model was brought out in October 1925 with a new 4-cylinder engine. There were several versions, the PK26 and PKA26 being the bus versions for up to 29 seats, differing in wheelbase and overall length. PN26 and PNC26 were coach versions for up to 26 seats differing in wheelbase. Production of the 26 model continued until 1932.

Original Fleet No.	Registration	New	Chassis	Body	New Body	New / Previous Owner	Out
	AX 8941	3/1926	Albion Viking PK26 (5002K or 5004G)	B29-		ex-Valleys Motor Bus, Tredegar	
	AX 8948	3/1926	Albion Viking PK26 (5003K)	C26-		ex-Valleys Motor Bus, Tredegar	
4	AX 9380	3/1926	Albion Viking PK26 (5004G or 5002K)	B29-		ex-Valleys Motor Bus, Tredegar	by 1948
18	AX 9621	10/1926	Albion Viking PK26 (5019H)	-30-		ex-Valleys Motor Bus, Tredegar	by 1948
		5/1926	Albion Viking PN26 (5009A)	C26-		ex-Valleys (Ebbw Vale)	
		8/1926	Albion Viking PK26 (5014L)	B26F		ex-Valleys (Ebbw Vale)	
		3/1928	Albion Viking PK26 (5054I)			ex-Valleys (Ebbw Vale)	
60	DF 296	7/1926	Albion Viking PK26 (5009I)	N. Counties B26-		ex-Gloucestershire Transport, Lydney	by 1948
61	DF 60	6/1926	Albion Viking PK26 (5010J)	Jones & Bence B26F	N. Counties by 1936	ex-Gloucestershire Transport, Lydney	by 1948
62	DF 576	8/1926	Albion Viking PK26 (5014J)	Jones & Bence B26F		ex-Gloucestershire Transport, Lydney	by 1948
63	DF 577	8/1926	Albion Viking PK26 (5013D)	Jones & Bence B26F		ex-Gloucestershire Transport, Lydney	by 1948
64	DF 747	8/1926	Albion Viking PK26 (5014K)	Hickman B26R		ex-Gloucestershire Transport, Lydney 15	by 1948
65	DF 1833	3/1927	Albion Viking PK26 (5025E)	N. Counties B26F		ex-Gloucestershire Transport, Lydney	by 1948
	DF 2023	3/1927	Albion Viking PK26 (5025F)	B26F		ex-Gloucestershire Transport, Lydney	
	DF 4888	4/1928	Albion Viking PK26 (5054H)	B32R		ex-Gloucestershire Transport, Lydney	
121*		9/1928	Albion Viking PK26 (5070H)	Strachan C--D		ex-Gloucestershire Transport, Lydney	
106	WO 2617	3/1929	Albion Viking PKA26 (5074K)	Strachan B26D		ex-Gloucestershire Transport, Lydney	by 1948
108	WO 2618	3/1929	Albion Viking PKA26 (5076A)	Strachan B26D		ex-Gloucestershire Transport, Lydney	by 1948
59	WO 2885	5/1929	Albion Viking PKA26 (5075D)	N. Counties B26F		ex-Gloucestershire Transport, Lydney	by 1948
155	WO 3726	2/1930	Albion Viking PKA26 (5088G)	N. Counties C26-		New	by 1948
58	WO 4240	5/1930	Albion Viking PKA26 (5090J)	N. Counties B26-		New	by 1948
176	WO 4266	6/1930	Albion Viking PNC26 (5083G)	N. Counties C26D		New	by 1948
177	WO 4267	6/1930	Albion Viking SpPNC26 (5091A)	N. Counties C26-		New	by 1948
178	TY 3745	9/1927	Albion Viking PKA26 (5044A)	Stewart B29R		ex-Robinson, Eltrincham 1931	by 1948
179	TY 3897	12/1927	Albion Viking PK26 (5044L)	N. Counties B29R		ex-Robinson, Eltrincham 1931	

\* see photograph

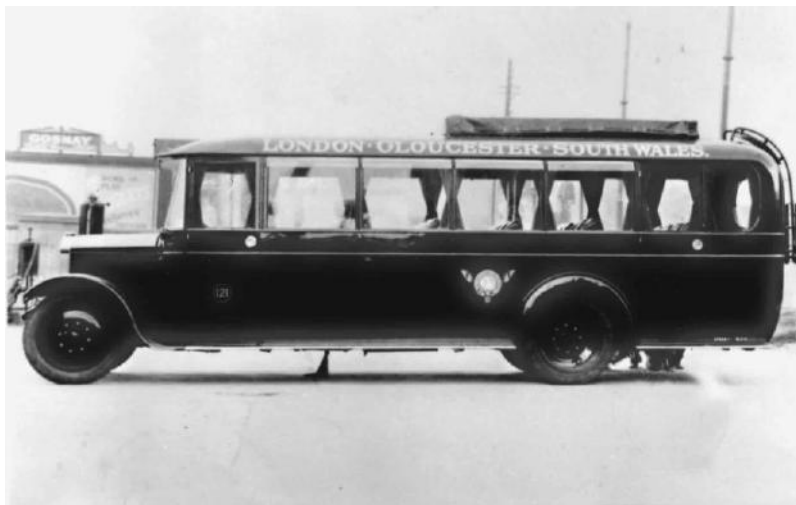
## Red & White Services Fleet List 1930-1975



Official view of Gloucestershire Transport Albion PK26 DF 747 with Hickman bodywork as Gloster No. 15. (Omnibus Society / Roy Marshall)



Albion PK26 DF 747 in service in 1927.



Albion PK26 with Strachan & Brown bodywork displaying fleet no. 121 in the Red & White-Rural England livery used on some of its vehicles in the 1928-29 period when the London-South Wales service was operated in association with Rural England Motor Coaches. The vehicle is possibly built on PK26 chassis no. 5070H. The location is outside the Strachan factory. (Omnibus Society / Roy Marshall)



1930 Albion PNC26 WO4266 (176) with Northern Counties bodywork in early Red & White livery with Garter and Buckle device (Clive Jones)